

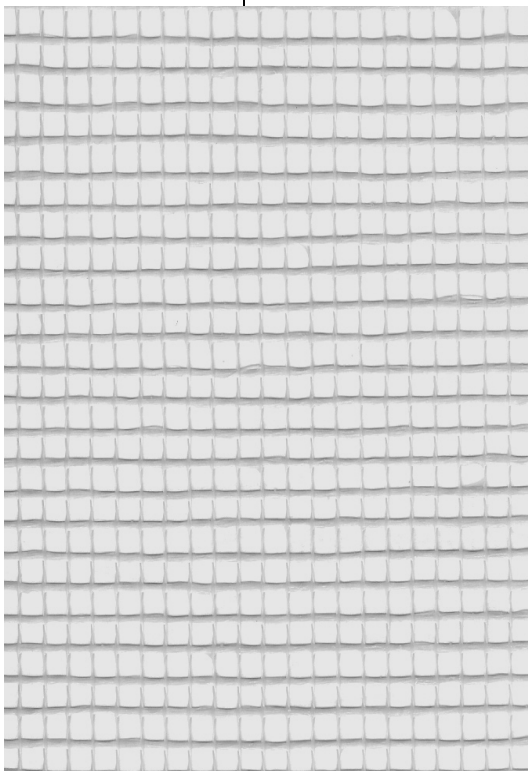
DYNTEK FibreMesh Roll

Dyntek FibreMesh Roll is widely used for reinforcement of skim coat plaster in drywall and AAC (autoclaved-aerated concrete) blockwork applications such as joints, corners and crack repairs/prevention.

Manufactured from fibreglass, it is woven into mesh size of 4mm x 4mm and coated with anti-alkali resin.

Benefits:

Dyntek FibreMesh Roll is strong and convenient to apply. Its use enhances bonding of skim-coat plaster especially at junction between dissimilar surfaces (eg.concrete/blockwork) and reinforcement of joints.



Product Code	Roll Width* (mm)	Roll Length** (m)
FMR150/45	150	45
FMR200/45	200	45
FMR1000/45	1000	45

* other widths available upon request

** subject to change to longer lengths

Product Data

• Material		Glass filament
• Model of raw yarn	Warp	134 tex x 2
	Weft	320 tex
• Weave		Union
• Mesh Spacing		4.0mm x 4.0mm
• Mesh Weight		165g/m ² ± 5g
• Tensile Strength	Warp	1500N/50mm
	Weft	1800N/50mm